

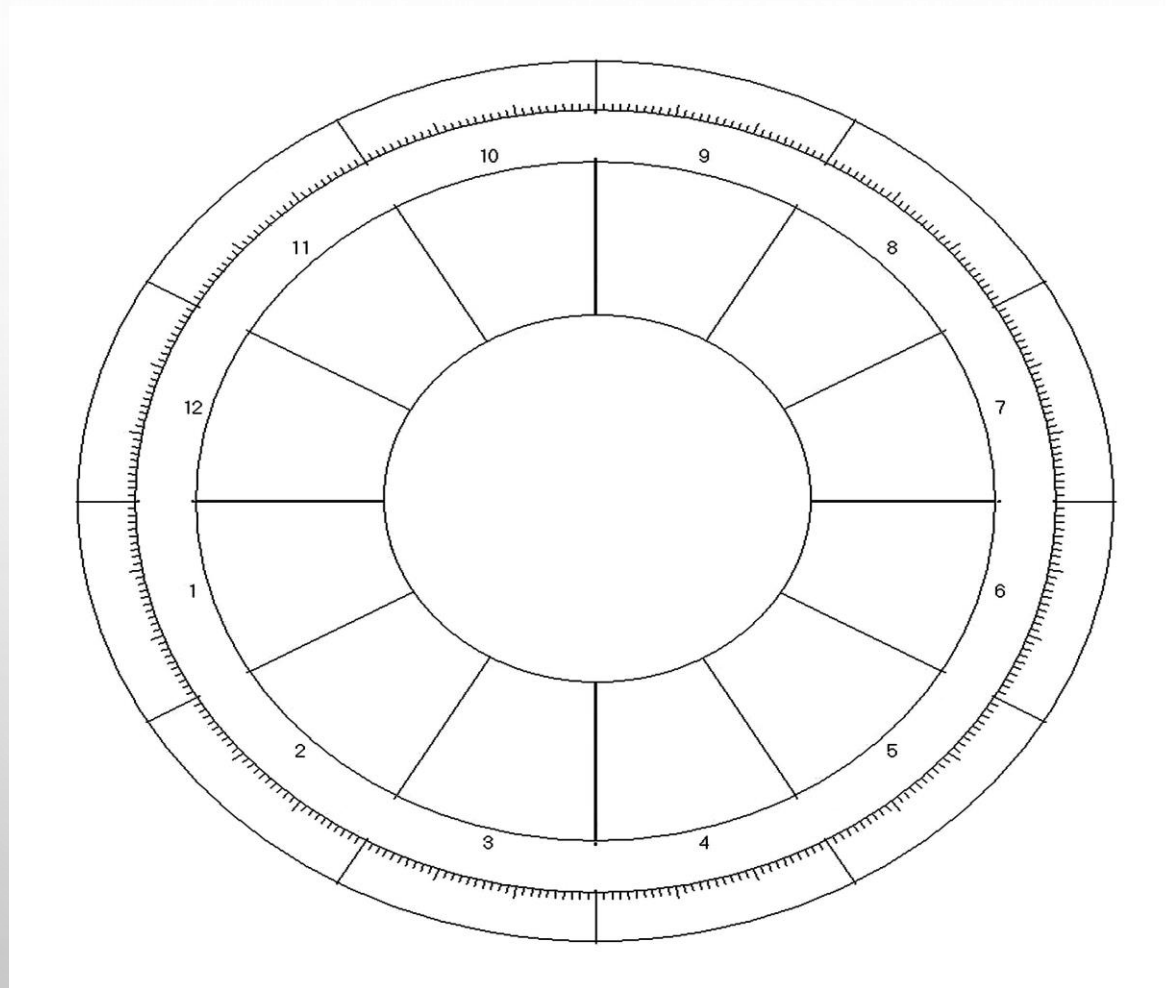


AN INTUITIVE STUDY OF RELATIONSHIPS AND KARMIC CONNECTIONS **SESSION 1**

EVOLVEMENT OF CONSCIOUSNESS
THROUGH

ASTROLOGY AND TAROT

Please take notes on a template --- to learn how to see this in the movement of the chart. I will send a separate copy for you to have printed. You need several of these.








Learning to Synthesize information derived from intuition related to Astrology and Tarot because we are :


Divine fragments of the ONE universe. We, as personalities are receiving guidance from our Soul through the electromagnetic field which is made up of SYMBOLS, SHAPES, MATHEMATICS, NUMBERS.

As above, so below with every detail.

We come to the earth plane to grow in wisdom, in love, and in power; and by doing this need to develop 'practical' touch with the world around us.

Approximately 30% of our soul is reincarnated in this body which forms a shadow and an upside down (Hanged Man) connection to the earth. The other part, when 'conscious' exists at a higher level with higher vibrations which we will call our 'universal essence' also our 'soul' communication.






We have to learn the 'language of vibrations' that come through the multidimensions though intuitive understanding of the chart and tarot....not the intellectual knowledge only...in fact that hampers intuitive understanding.

I recommend only one hour of study per day or you will overwhelm your own intellect which interferes with your intuition.

I would also recommend an hour spread through the day for meditation and minimal distractions, so you can hear and feel the vibrations from the higher centers.



Astrology and Tarot --- A study of the Soul's communication with the Personality, understanding the flow of electromagnetic energy in the spiritual understanding of the

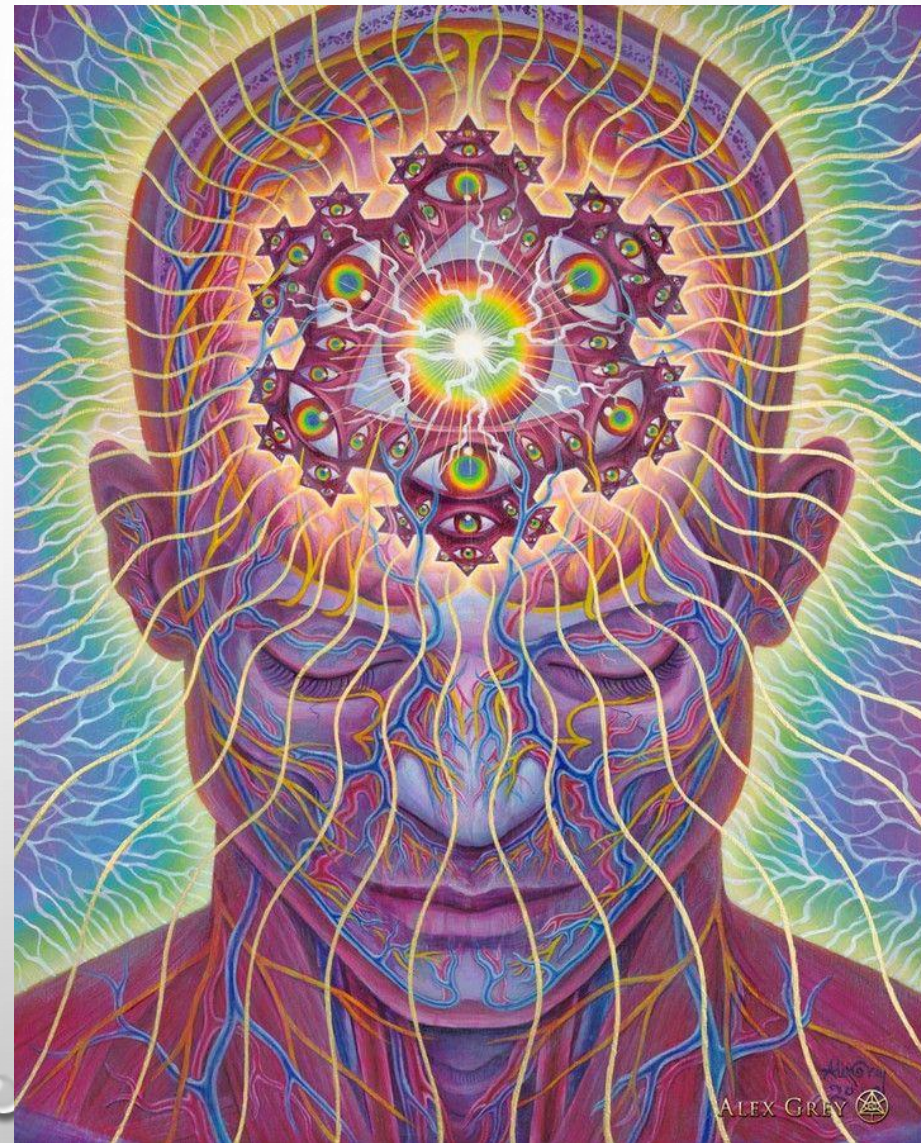
(s) – Personality (ascendant/rising sign and chart set up) response to the external world and the relationships that exist at that level. Why is it important to know time of day to set up chart?

S – Higher Self/Soul Communication

PH – Physical Health

(all of these levels are functioning at all times, levels are determined by your own ability to reflect, take care of yourself, follow your own guidance, creating clear communication with relationships.

How do we develop a basic understanding of Astrology and Tarot and the relationship to the soul's evolution? This is an Alex Grey image. Explains it all.



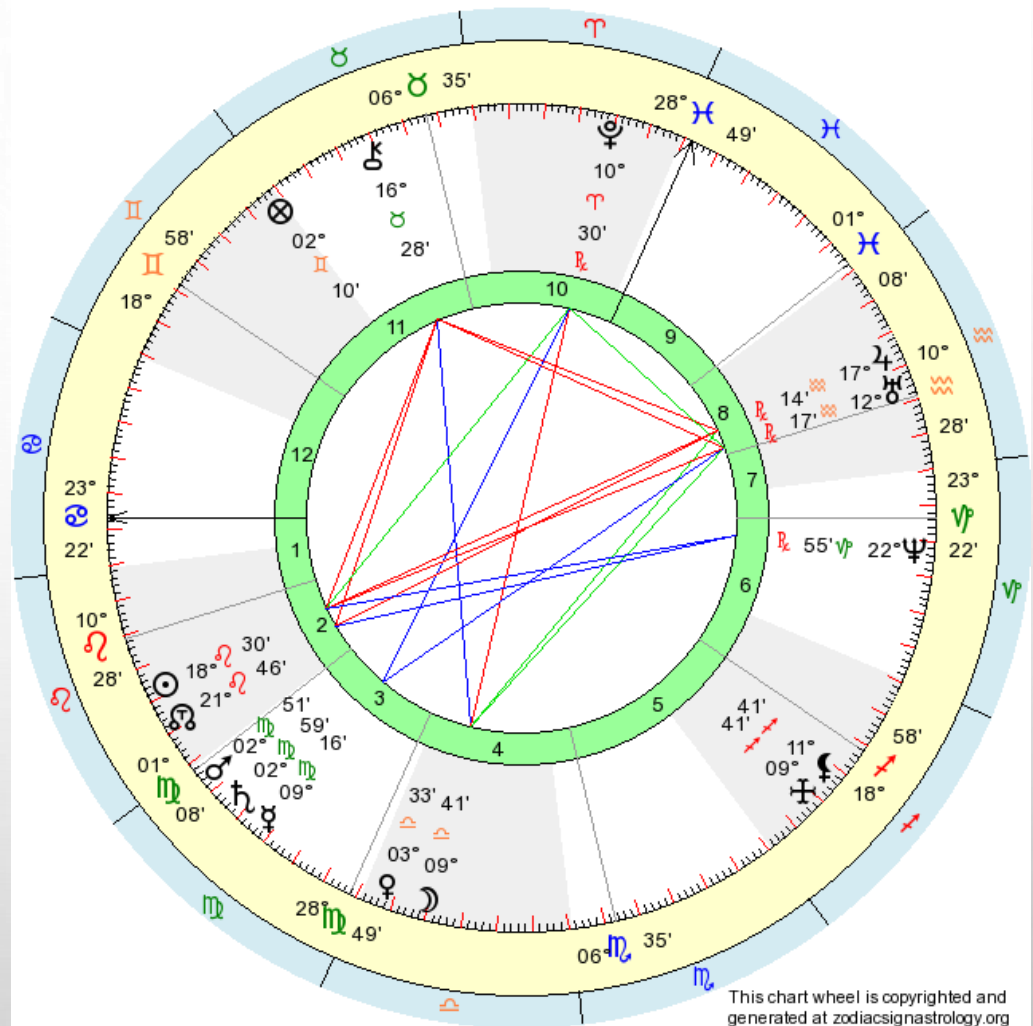
***How does our intuition further the
evolvment of the soul and
consciousness through the personality?***

***Body Type/Personality --- Cancer
ascendant***

***Soul Consciousness evolvment --- Sun
in Leo conjunct North Node***

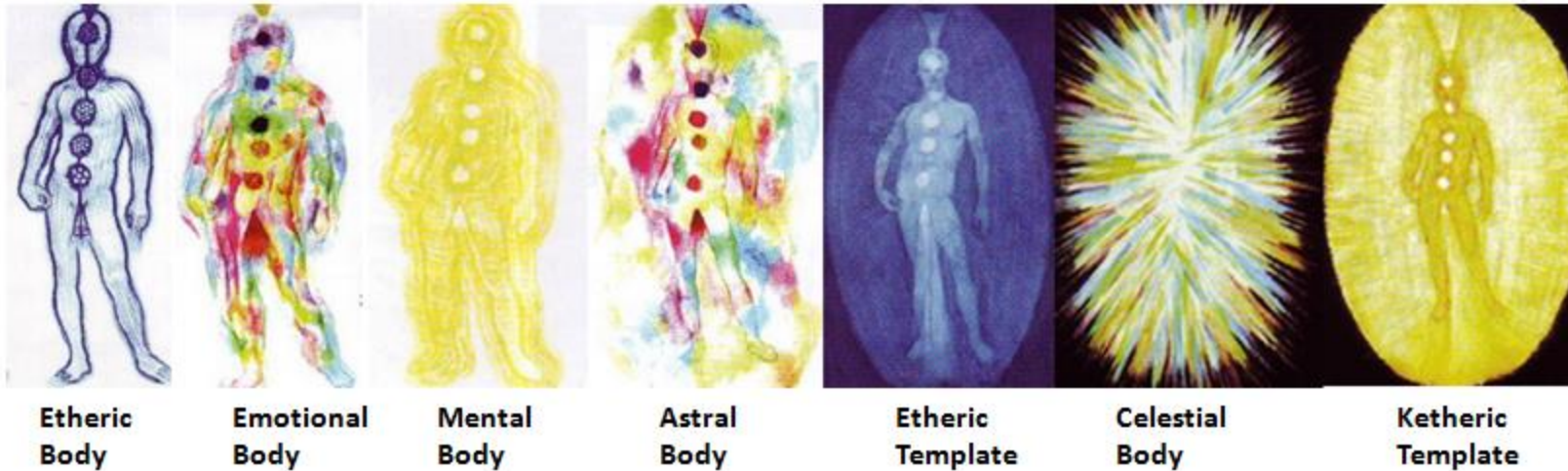
Using Helena Blavatsky's chart as an example.

Helena P. Blavatsky, born Friday, August 12, 1831 at 02:17 (time zone = GMT +2 hours) at 34e59 and 48n27



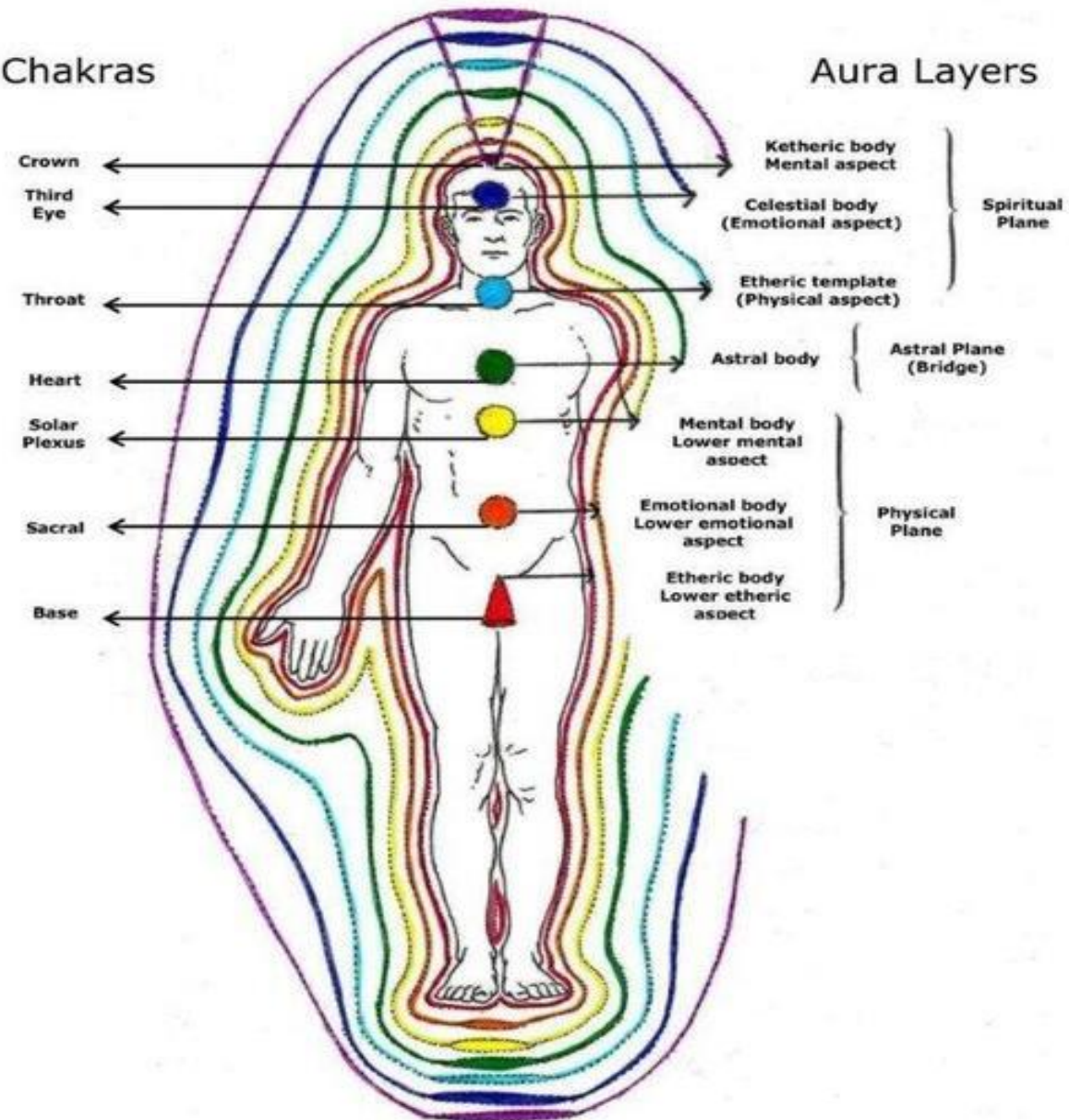
What connects us to the 'higher worlds', the electromagnetic field, and 'life after death' ? How is karma viewed from that space as we struggle with personality here on the earth plane?

The Brennan Model of the first 7 Levels of the Human Energy Field



Chakras

Aura Layers





NORTH AND SOUTH NODES

LUNAR NODES

Life is an opportunity to learn from and outgrow the tendencies of our South Node and to find expansion, success, and self-confidence on the path to our North Node.

© JANSFILLER.ASTROLOGY



South Node

The sign where the South Node is placed natively (always the polar opposite of North Node) shows the accomplishments and/or misgivings of past incarnations.

The house placement indicates the area of life where these trials took place.

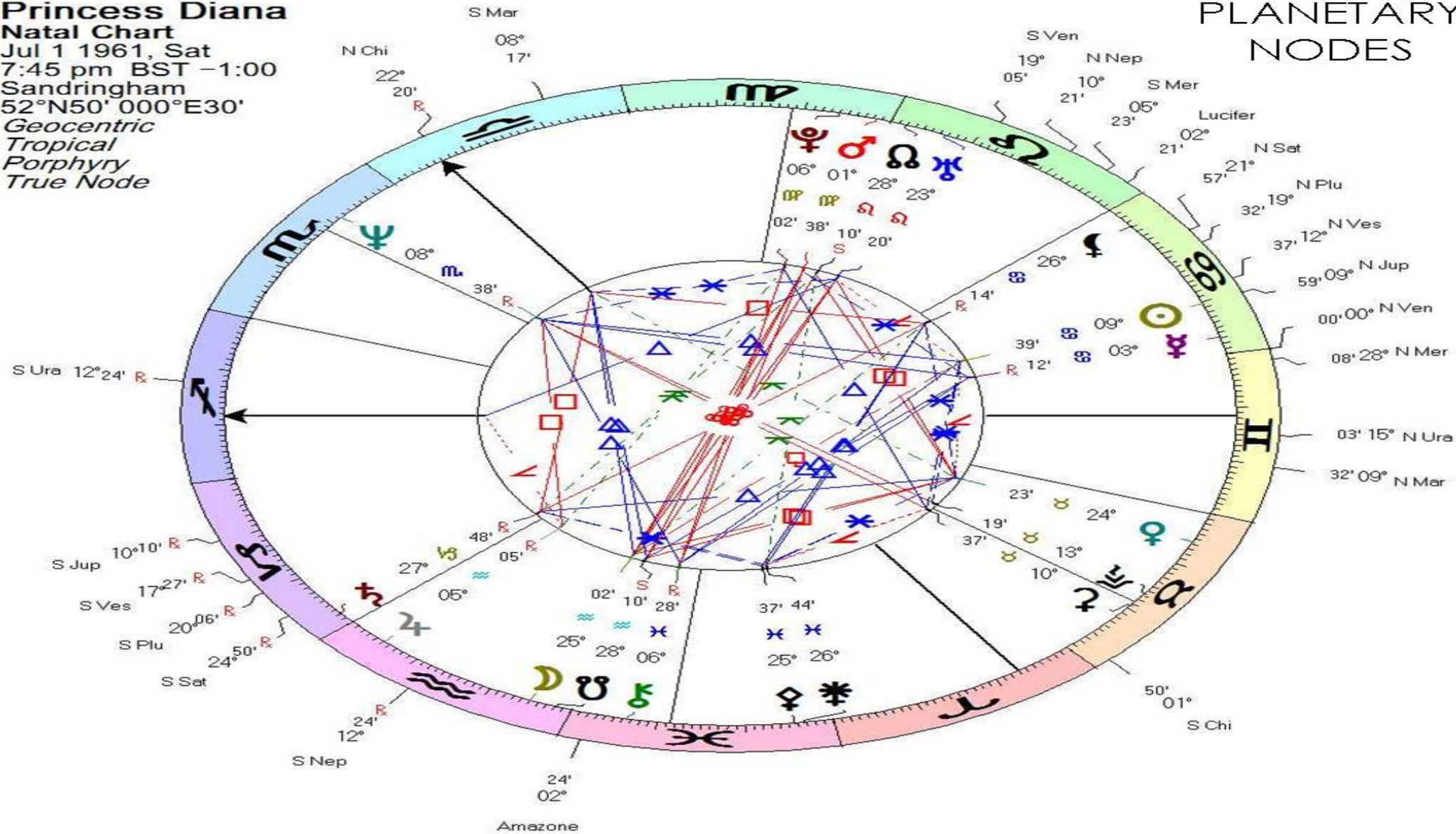
The aspects (and transits) to the South Node helps the individual to revisit, recognize and rework modes of action to ensure success in the direction of rightness and balance. This can only be achieved if the native is able go beyond what has already been attained.

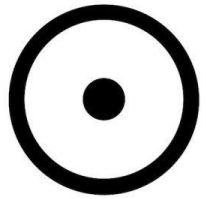
KARMA AND THE
SOUTH NODE ALSO IN
SYNASTRY/BI-WHEEL

Princess Diana Natal Chart

Jul 1 1961, Sat
7:45 pm BST -1:00
Sandringham
52°N50' 000°E30'
Geocentric
Tropical
Porphyry
True Node

PLANETARY NODES





SUN



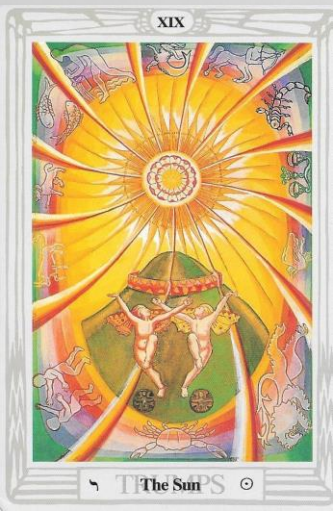
Sign Leo
House 5



s(external world) --- authority, creativity, administrative ability, parenting.

S (soul consciousness) ---- Power, dignity, pride, ambition, generosity, higher Will, wisdom.

PH (physical level) --- heart, circulation, arteries, eyes, spinal chord and vitality.



The Sun card is often thought of with all of the attributes above and can be read using the highest vibration of each of the above.



MOON

(s) -- the mother, the family, the home, real estate, moods and feelings, water.

S --- instincts, impulses, feelings, receptivity, sensitivity.

PH --- stomach, container lining of organs, breasts, cerebellum base of the brain.

The Moon in Tarot is often drawn when the above issues need to be addressed, mostly around the feminine, home and family.





MERCURY

Sign –
Gemini/Virgo
House – 3/6



(s) ---- schools, colleges, teaching, learning, communication, routine, cars, transportation and short distance travel.

S --- inner communication, ability to reflect and contemplate, clear communication when in discussion, ability to set routines and prioritize, higher logic and reasoning.

PH --- brain, nervous system, speech mechanisms, intelligence and centers of the brain connected with both sides.

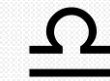
There are several tarot cards that represent Mercury but I chose this because when you are functioning at 'optimum' level, you become the 'connection to the magician' and able to really function at a higher level. I would encourage you all to look at the Lovers card as well and the swords ruling Mercury.





VENUS

Sign –Taurus/Libra
Houses – 2/7



(s) --- beauty, ornaments, dancing, flowers, jewels, receptivity as to affection, money, riches, rich sweet foods.

S --- affection, love, ability to be peaceful, feeling of equality, balance, elegance.

PH --- adrenal glands, throat, generative system, ability to process sweets.

Venus is also represented by several tarot cards, however, at optimum level the Empress is the major holder of this elegant energy.





MARS

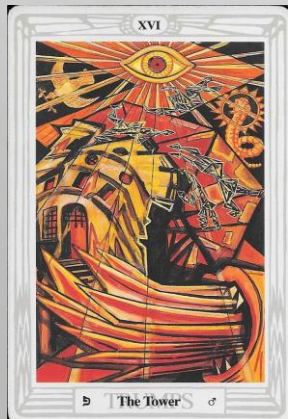
Sign –Aries
House – 1st



(s) --- soldiers, warriors, surgeons, entrepreneurs, innovators, technicians, engineering.

S --- change agents, courage, bravery, enterprising, impulsive action, direct action

PH – head, gall bladder, fevers, skin, sharp pains, accidents.



The Tower card is the optimum helper of this change agent. Mars works well in active elements of change and reconstruction, becoming both an initiator and teacher of change, not adaptability.

4

JUPITER

Sign –
Sagittarius
House -- 9



(s) --- judges, magistrates, religion, law, philosophy, priests, theaters, philanthropy.

S --- combination of feeling and thought, harmony, devotion, dream language, sociability.

PH – thighs, liver, blood muscles, growth, pituitary, over active.

Fortune card is only one of the cards around Jupiter but is the overabundance of fortune and large gains and losses.



h

SATURN

Sign --
Capricorn
House -- 10



(s) --- karmic conditions, crystallization of matter, conditioning, grand parents, family authority, monks, hermits, builders, gardeners.

S --- thought and will overrule feelings and emotions, sense of self is very strong, ego boundaries, logical and linear thinking rather than intuitive thinking.

PH – bones, teeth, spleen, rheumatism, arthritis, melancholia.



The Devil card epitomizes all the above characteristics – mostly earth bound people who need to put one foot in front of the other to reach a goal, i.e. the goat climbing straight up on a mountain.

URANUS

Sign – Aquarius
House -- 11



Aquarius

(s) --- group behaviors, friends, goals and ambitions, pioneers, occultists, research, technology.

S --- Intuition, free will, independent thought and intuition, in touch with electro magnetic current.

PH – brain, nervous system, circulation, ankles, hearing.



Aeon and the fool share this in my opinion, one is objective and has androgynous qualities, the other is one's ability to take risks and challenges to a higher order.



NEPTUNE

Sign
House - 12



(s) --- film industry, priests, mystics, dreamers, visionaries, mediums, hospital system, artists, musicians.

S --- Strong currents of feelings, empathy, imagination, intuition and dream symbology understanding.

PH — feet, immune system, balance in the brain, water intake and edema.

Priestess and other cups cards represent these above elements.





PLUTO



Sign --- Scorpio
House - 8



(s) --- caves, enclosures underground, prison system, surgeons, psychiatry, CIA and clandestine workers, i.e. special forces, mental institutions.

S --- Understand underlying situations, trauma specialists, work in the trenches of humanity for TRANSFORMATION.

PH – Colon, large intestine, abnormal growths, blood issues.



Transformation and purging of unneeded characteristics toward transformation at a higher order, death of the existing condition.

Next class Asteroids, relationships and bi wheels.